



## Summary of Public Input

### **Virtual Office Hours: Lake Ocean Hills NPA**

December 21 @ 12:00pm/January 6 @ 5:00pm 6

#### Participants

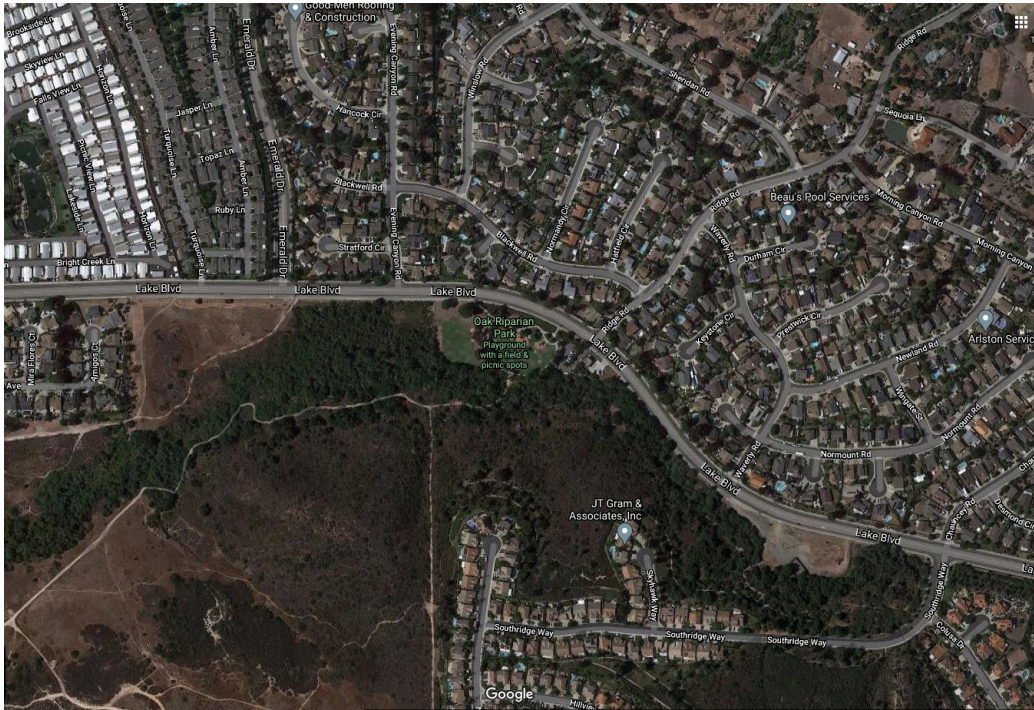
- On-street parking supply is strained in areas where multifamily housing is prevalent (e.g., Thunder Road). Are on-site parking resources being fully utilized?
- The shopping center on Melrose, where the Ralph's grocery store closed a number of years ago, could be redeveloped with mixed-use.
- Melrose
- Emergency response to parks and open spaces near Lake Boulevard is sometimes hampered by
- Topography in these NPAs can be an impediment to active transportation. Perhaps better transit service (e.g., on Lake Boulevard) would encourage more walking and biking.
- Formal access to the Calavera Preserve should be provided through Oak Riparian Park.
- Red light running is common at the intersection of Lake Blvd. and College Blvd.
- The City should identify areas in the Hwy 78 corridor that can be up-zoned for affordable housing.
- The City should explore further fee reduction for ADUs.
- The City needs to revisit its inclusionary housing program, which isn't producing much inclusionary housing.
- Regional/sub-regional coordination of transportation planning is important in these NPAs, which border two other cities and rely on a state highway. The City should work more closely with Vista and Carlsbad on common mobility challenges.
- The City should work with NCTD to improve the safety and comfort of bus stops, including those on Vista Way. If people don't feel safe and secure at bus stops, they won't ride the bus.
- The intersection of Lake Blvd and College Blvd is not pedestrian friendly. Seniors and others residing in areas north of College Blvd do not feel safe walking to commercial venues like the WalMart center.
- Industrial land is scarce and should be reserved for industrial uses.



Pedestrian access to Lake Park, Lake Elementary and other amenities can be improved



Commercial centers on Melrose could accommodate mixed-use development



Pedestrian access between Oak Riparian Park and the Calavera Lake Preserve could be improved



The intersection of College Blvd and Lake Blvd presents challenges to pedestrian access